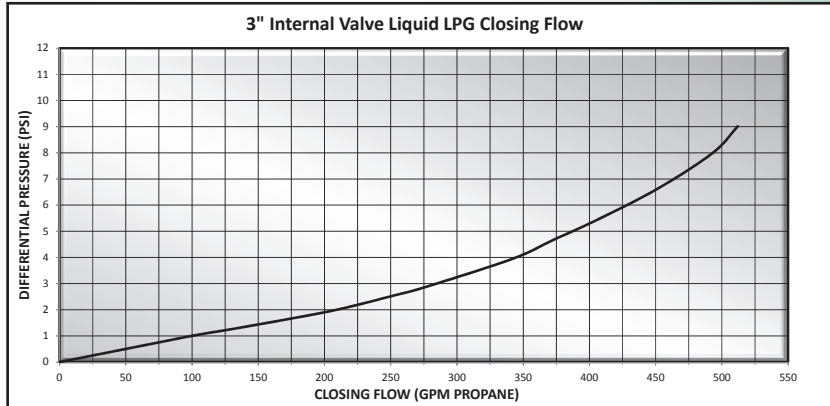


# 3" Single Flanged Internal Valve

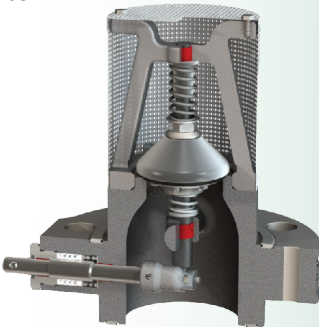


## Description

Intended for use on transport trucks, bobtail trucks and large storage tanks with 3" flanged connections in directional or bi-directional flow applications. Provides both manual shut-down as well as excess flow closing in the event of the piping being separated from the valve. Can be equipped with a pneumatic actuator open/closing device.

## Features

- All stainless construction
- Compact design for installations into confined spaces
- Precision machined stem & stem guide
- Fully retained seat disc
- Largest variety of excess flow closing values
- Corrosion resistant sleeved flange bolt holes
- Xylan coated corrosion resistant mounting studs
- Removable data plate
- Threaded packing gland with seal ejector spring
- Standard construction utilizes nitrile seals
- Available with Neoprene, FKM, or FFKM seals
- UL LISTED for LPG & NH<sub>3</sub> service
- Rulon™ bushing on stem and stub shafts



"X"	3" Valve Liquid Closing Flow Values
175	175 GPM LPG Closing Flow
250	250 GPM LPG Closing Flow
300	300 GPM LPG Closing Flow
375	375 GPM LPG Closing Flow
400	400 GPM LPG Closing Flow
475	475 GPM LPG Closing Flow
500	500 GPM LPG Closing Flow

For NH3 Multiply GPM by .90



MEC Excelsior™ 3" Internal Valves	
Part No. *	Description
ME990-3F-"X"	Excelsior™ 3" Single Flange Internal Valve - Only
ME990A-3F-"X"	Excelsior™ 3" Single Flange Internal Valve - with Pneumatic Actuator

\* Note: Indicate desired excess flow closing value when ordering - see chart for values  
 i.e. ME990-3F-500 (500GPM)  
 To order FFKM add "K" after the prefix part number i.e. ME990K-3F-500  
 To order Neoprene add "N" after the prefix part number i.e. ME990N-3F-500  
 To order FKM add "V" for after the prefix part number i.e. ME990V-3F-500

**PLEASE SEE BACK PAGE FOR SERVICE AND REPAIR KITS**



For Your Local Marshall Excelsior Distributor Call 269-789-6700,  
 Fax 269-781-8340 or E-mail: sales@marshallexcelsior.com  
 www.marshallexcelsior.com



MEC <i>Excelsior</i> ™ 3" Internal Valve - Accessories	
Part No.	Description
ME207SF	PowerStroke Actuator

MEC <i>Excelsior</i> ™ 3" Internal Valve - Service Kits & Repair Parts	
Part No.	Description
ME990-3F-VRK	<i>Excelsior</i> ™ 3" Single Flange Internal Valve Complete Rebuild Kit
ME990-3F-SRK	<i>Excelsior</i> ™ 3" Single Flange Internal Valve Seal Repair Kit
ME990-3F-PRK	<i>Excelsior</i> ™ 3" Single Flange Internal Valve Stem Packing Repair Kit
ME990-3F-PGA	<i>Excelsior</i> ™ 3" Single Flange Internal Valve Stem Packing Gland Assembly.
ME990-3DF-153	<i>Excelsior</i> ™ 3" Single & Double Flange Internal Valve Inlet Flange Gasket - Stainless Steel
ME990-3F-109	<i>Excelsior</i> ™ 3" Single Flange Internal Valve Outlet Flange Gasket - Stainless Steel
ME990-3F-110	<i>Excelsior</i> ™ 3" Single Flange Internal Valve Mounting Stud (5-3/4" OAL B7 Xylan Coated)
ME902SK-02	3" Modified & 4" Single Flange Internal Valve Heavy Hex Nut 3/4-10 B8
ME990-3F-24-150	3" & 4" Internal Valve Mounting Sleeve / Bushing

MEC <i>Excelsior</i> ™ 3" Internal Valve - Excess Flow Springs			
Part No. *	Description	Closing Flow	Color
ME990-106-175	<i>Excelsior</i> ™ 3" Single Flange Internal Valve Stainless Steel Excess Flow Spring	175 GPM	Purple
ME990-106-250		250 GPM	Black
ME990-106-300		300 GPM	Green
ME990-106-375		375 GPM	Yellow
ME990-106-400		400 GPM	Red
ME990-106-475		475 GPM	Silver
ME990-106-500		500 GPM	White



For Your Local Marshall Excelsior Distributor Call 269-789-6700,  
 Fax 269-781-8340 or E-mail: [sales@marshallexcelsior.com](mailto:sales@marshallexcelsior.com)  
[www.marshallexcelsior.com](http://www.marshallexcelsior.com)

