



# ME990-10-902 1 ¼" INTERNAL VALVE MANUAL LATCH INSTALLATION AND OPERATING MANUAL



**WARNING:** These products contain a chemical known to the state of California to cause cancer and birth defects or reproductive harm

## **!WARNING!**

Failure to follow these instructions or to properly install and maintain this equipment could result in an explosion and/or fire causing property damage and personal injury or death.

Install, operate and maintain Marshall Excelsior Co. equipment in accordance with federal, state, and local codes and these instructions. The installation in most states must also comply with NFPA No. 58, and ANSI/CGA G-2.1.

For installation in the European Union, the equipment must also comply with PED/TPED and EN ISO standards. Periodic inspections, intermediate inspections and exceptional checks of transportable pressure equipment should be carried out in accordance with the Annexes of Directive 2008/68/EC and with 2010/35/EU Directive (TPED) to ensure continued compliance with their safety requirements.

Only personnel trained in the proper procedures, codes, standards and regulations of the LP-Gas Industry should install, maintain and service this equipment.

Be sure all instructions are read and understood before installation, operation and maintenance. These instructions must be passed along to the end user of the product.

## Scope of the Manual

This manual covers instructions for installing the ME990-10-902 latch on the ME990-10 1 ¼" threaded "Exclerator" internal valve.

## Introduction

ME990-10-902 latch and remote release mechanism permits the 1 ¼" internal valve to be closed from a remote location. When the valve's operating lever is manually opened, the lever is automatically latched in that position. The lever can be released from a remote location by pulling on a cable attached to the pull ring, thus closing the internal valve. Thermal protection is provided by a built-in fusible element.

## Installation

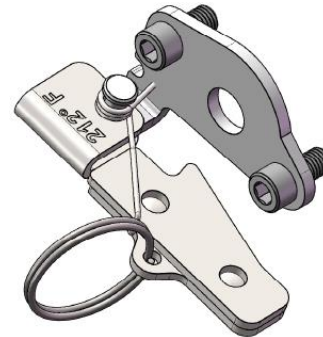
### **!WARNING!**

If the ME990-10 internal valve is installed in a pressurized tank, ensure that the line pressure is 0 psi / 0 bar prior to beginning installation of ME990-10-902 latch. Failure to depressurize the line could result in personal injury.

### Marshall Excelsior Company

1506 George Brown Drive, Marshall, MI, 49068  
Phone (269) 789-6700, Fax (269) 781-8340  
[www.marshallexcelsior.com](http://www.marshallexcelsior.com)

The contents of this publication are for informational purposes only. While every effort has been made to ensure accuracy, these contents are not to be construed as warranties or guarantees, expressed or implied, regarding the products or services described herein or for their use or applicability. Marshall Excelsior Co. reserves the right to modify or improve the designs or specifications of such products at any time without notice. The MEC™ logo is the trademark of Marshall Excelsior Co.



**Remote Release:** To install the ME990-10-902 latch mechanism, first remove the operating lever and remove the cover plate by removing the two cap screws (retain cap screws). The new cover plate / latch assembly can be attached to the internal valve with the retained cap screws. Tighten the screws to 25 to 30 in-lb / 2.8 to 3.5 N•m torque.

A cable must be run from the pull ring on the ME990-10-902 latch to the release handle (MEP650 or MEP651 can be used) located at a remote point. The cable must be free of slack for proper operation, and the installation may require sufficient pulleys to keep the cable away from the side of the tank. Pulling the release handle allows the manual operating lever to return to the closed position. The fusible link in the mechanism will melt if exposed to fire, allowing the internal valve to close.

When closing the internal valve manually, pull back on the pull ring attached to the release mechanism to permit the valve lever to close.

### **!WARNING!**

Since there is strong spring force on the operating lever, avoid getting in the way of the lever as it moves to the closed position. Failure to do so could result in personal injury.

## Maintenance

### **!CAUTION!**

A simple preventive maintenance program for the internal valve and its controls will eliminate many potential problems.

### MEC Europe AsP

Alsvej 21  
8940 Randers SV  
Denmark

## ME990-10-902

MEC recommends these steps be conducted once a month:

1. Regularly inspect the operating lever to see that it operates freely and that there is no leakage around the stub shaft. If there is leakage or sticking, the packing should be replaced.
2. Check for tight closure of the seat discs regularly. Any leakage indicates a defect in the seat caused from wear or from dirt or scale lodging and embedding in the seat. To check for leakage, close the internal valve, and exhaust downstream pressure. Close the first valve downstream from the internal valve, and note any pressure build-up by means of a pressure gauge. If leakage is indicated, the seat discs should be replaced.
3. All operating controls should be regularly inspected, cleaned, and lubricated. Periodic lubrication of the operating lever / clevis pivot is recommended.
4. Check to see that the ME990-10-902 latch allows the internal valve to fully open and operates freely to close the valve.

### Parts Ordering

#### Important

Use only genuine MEC replacement parts. Components that are not supplied by MEC should not, under any circumstances, be used in any MEC valve, because they might adversely affect the performance of the valve, and could give rise to personal injury and property damage.

When corresponding about this equipment, always reference the equipment model or series number found on the nameplate.

### Parts List

1. Packing Retainer
2. Fusible Latch
3. Fusible Latch Spring
4. Manual Latch Washer
5. 1/4"-28 Socket Head Cap Screw, 2 required
6. Clevis Pin
7. Cotter Pin
8. 1-1/4" Steel (Key) Ring

