

MEC SAFETY EQUIPMENT

Gauge Assemblies and Valves

GAUGE ASSEMBLIES:

Intended for bobtail drivers who are trained to conduct out of gas leak check tests. The SQTG Series gauge assembly give the service technician what is needed to test pressure regulators for flow set point and lock-up pressure in addition to leak check testing

NOTE: Model number suffix A or B designates which type of pressure tap valve will be used. The A designates the type VA valve (Schrader) and B designates the type VB valve (1/4" flare).



ME-TG30A and ME-TG30B Single Point Gauge Assemblies come with a 30 PSIG gauge and are used for leak check tests at intermediate pressure at outlet of first stage regulator or inlet to second stage regulator.

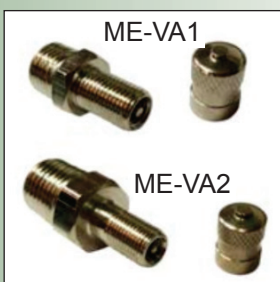
ME-KVA and ME-KVB Multi Point Kits are gauge assemblies with 30 PSI gauges and built in regulators that limit the pressure to the gauge to 12 PSI so the gauge can be used for leak check testing at intermediate pressure taps or at tank pressure using the high pressure test block. Kit includes twelve 1/8" NPT valves and six 1/4" NPT pressure tap valves.

ME-SKVA and ME-SKVB Universal Kits are gauge assemblies with 35" W.C. gauges and built-in regulators that limit the pressure to the gauge to 22" W.C. so the gauge can be used for leak check testing anywhere in the system. It can also be used to measure second stage, low pressure regulator set point and lock up pressure or appliance manifold pressure. Kit includes twelve 1/8 npt and six 1/4 npt pressure tap valves.



Part No.	Description	Pressure Setting
ME-TG30A	Type A (Schrader) Single Point Gauge Assembly	30 PSIG
ME-TG30B	Type B (1/4" Flare) Single Point Gauge Assembly	30 PSIG
ME-KVA	Type A Multi Point Test Kit	30 PSIG
ME-KVB	Type B Multi Point Test Kit	30 PSIG
ME-SKVA	Type A Universal Test Kit	35" WC
ME-SKVB	Type B Universal Test Kit	35" WC

GAUGE ASSEMBLY PRESSURE TAP VALVES:



Part No.	Description	Connection	Connection
ME-VA1	Type A Pressure Tap Valve	1/8" MNPT	.305 Male
ME-VA2	Type A Pressure Tap Valve	1/4" MNPT	.305 Male
ME-VB1	Type B Pressure Tap Valve	1/8" MNPT	1/4" Flare
ME-VB2	Type B Pressure Tap Valve	1/4" MNPT	1/4" Flare
ME-HSA	Hose End Swivel Connector x Type A Pressure Tap Valve		
ME-HSB	Hose End Swivel Connector x Type B Pressure Tap Valve		



For Your Local Marshall Excelsior Distributor Call 269-789-6700,
 Fax 269-781-8340 or E-mail: sales@marshallexcelsior.com
 www.marshallexcelsior.com



MEC SAFETY EQUIPMENT

Leak Check and Regulator Testing Kits

LEAK CHECK AND REGULATOR TESTING KITS:

Intended for bobtail drivers who are trained to conduct out of gas leak check tests. The SQTG Series gauge assembly give the service technician what is needed to test pressure regulators for flow set point and lock-up pressure in addition to leak check testing.

NOTE: Model number suffix A or B designates which type of pressure tap valve will be used. The A designates the type VA valve (Schrader) and B designates the type VB valve (1/4" flare).



QTG127A and QTG128B Dual Gauge Kits are used for leak check tests at intermediate pressure using the 30 PSI gauge and also leak check tests at tank pressure using the 300 PSI gauge and the high pressure test block supplied with the kit. The hose assembly connection to the system pressure tap valve incorporates a quick disconnect fitting to either pressure gauge. Kit includes six pressure tap valves, either type A or type B depending on which kit is specified.

QTG16A and QTG16B Dual Gauge Kits are used for leak check test at intermediate pressure using the 30 PSI gauge and testing first stage regulator. The 35" water column gauge is used for testing low pressure second stage regulator set point and lock up press

SQTG4A and SQTG4B Four Gauge Kits include a 30 PSI gauge, a 300 PSI gauge, a 5 PSI gauge, a 35" water column gauge, and a high pressure test block plus six pressure tap valves either type A or type B depending on which kit is specified. The hose quick disconnect allows for attachment of any one of the gauges. A leak check pressure tap valve can be anywhere in the system with the proper gauge attached for leak check testing. This kit also allows the service technician to test all pressure regulators, including the first stage, using the 30 PSI gauge, a 2 PSI regulator using the 5 PSI gauge, and low pressure 11' W.C. regulators or appliance manifold pressure using the 35" WC gauge.

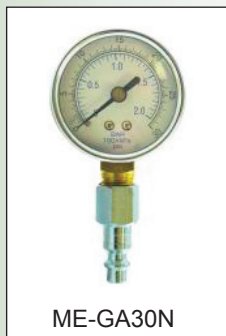


Part No.	Description
ME-QTG127A	Dual Gauge Leak Check Kit - 30 and 300 PSI Gauges with Type A Valves (6)
ME-QTG128B	Dual Gauge Leak Check Kit - 30 and 300 PSI Gauges with Type B Valves (6)
ME-QTG16A	Dual Gauge Leak Check Kit - 30 and 30" WC Gauges with Type A Valves (6)
ME-QTG16B	Dual Gauge Leak Check Kit - 30 and 30" WC Gauges with Type B Valves (6)
ME-SQTG4A	Four Gauge Kits (Includes 5, 30, and 300 PSI Gauges) with Type A Valves (6)
ME-SQTG4B	Four Gauge Kits (Includes 5, 30, and 300 PSI Gauges) with Type B Valves (6)

REPLACEMENT GAUGES AND ADAPTERS:



ME-AD-BA



ME-GA30N

Adapters		
Part No.	Description	
ME-AD-AB	Adapter - Connects Type A hose swivel connector to type B pressure tap valve	
ME-AD-BA	Adapter - Connects Type A hose swivel connector to type A pressure tap valve	
Gauges		
w/ 1/4" MNPT Connection	w/ Quick Disconnect Nipple	Description
ME-GA-30	ME-GA30N	0-30 PSI tube gauge - 1/4" MNPT Inlet
ME-GA-300	ME-GA300N	0-300 PSI bourdon tube gauge
ME-GA35WC	MEA35WCN	35 inch water column, diaphragm capsule gauge
ME-GA5	ME-GA5N	5 PSI diaphragm capsule gauge



For Your Local Marshall Excelsior Distributor Call 269-789-6700,
 Fax 269-781-8340 or E-mail: sales@marshallexcelsior.com
 www.marshallexcelsior.com

